

K760

KNUCKLEBOOM LOADER



PERFORMANCE BENCHMARK.

As the industry benchmark for nearly 20 years, the loader hydraulic system features superior multi-functioning capability enabling operators to lift, swing and rotate grapple simultaneously without impairing performance.



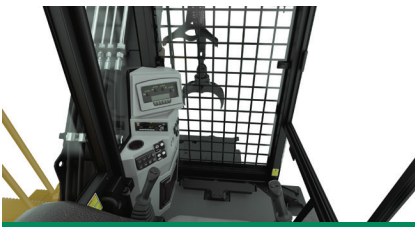
SUPERIOR FEEL.

The precisely tuned pilot controls provide feedback through the joysticks and foot pedals during dynamic operations providing the operator a superior feel of the machine. This results in smoother movements and finer controllability.



OPERATING MODES.

Select from three operating modes to meet fuel consumption and production requirements. All modes maintain a consistent system pressure which allows lift capacity and swing torque to remain equal regardless of the mode selected.



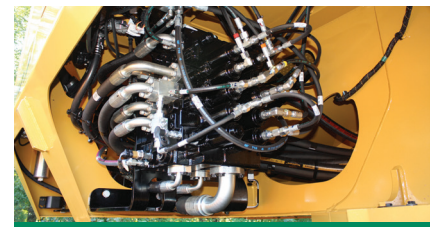
OPERATOR COMFORT.

The new all down stabilizer function provides uniform stabilizer cylinder force improving machine footing. Combined with a quiet cab, great visibility and a powerful HVAC system keep operators comfortable and productive.



EXCELLENT SERVICEABILITY.

Ground level access of engine, fuel, pilot, case drain filters and the standard electric hydraulic oil fill pump make for safe, easy service. The new grapple rotate flushing reminder ensures oil is circulated back through the filter.



GREATER DURABILITY & RELIABILITY.

The hydraulic system and components have proven to be the most durable system ever designed into a knuckleboom loader. Extreme duty booms and structures are designed to withstand heavy side-to-side delimiting applications day in and day out.

K760 SPECIFICATIONS

Engine Model	Cat® C4.4 Tier 4 Final	Fuel Capacity	100.0 gal 378 L	Maximum Reach	32' 0" 9.75 m
Gross power	173 hp 129 kW	DEF Capacity	5.0 gal 19 L	Transport Width	8' 6" 2.57 m
Engine Speed	1800 rpm	Swing Torque	73,800 lbf-ft 100 360 N-m	Transport Height	13' 3" 4.04 m
Weight	36,500 lb 16 556 kg	Swing Speed	9.5 rpm	Transport Length	52' 1" 15.88 m

Base configuration includes standard loader hydraulics and standard boom and stick. All transportation dimensions are of a trailer mounted loader.

POWERTRAIN

- Cat C4.4 engine certified to EPA Tier 4 Final
- Primary and secondary fuel filters, including water separator
- Electric fuel priming pump
- Electric fuel transfer pump
- 2-Stage engine air cleaner
- Oversized cooling system
- Engine driven, on demand cooling fan
- Engine auto idle down

HYDRAULICS

- Excavator style "negacon" pump control system
- Variable displacement pumps
- High performance, multi-functioning main control valve
- Bar slasher/delimiter hydraulic package
- In-line return filter
- Electric hydraulic oil fill pump
- Pilot accumulator for boom lowering
- Manual boom lowering control valve

OPERATOR ENVIRONMENT

- Enclosed cab with swing out front window guard meeting SAE J2267
- Dual pilot joystick control with foot pedal swing
- Reverse slope tinted windshield and skylight
- Sunshade
- High capacity HVAC system
- Air suspension high back seat
- AM/FM/Bluetooth Radio
- 24V to 12V converter and 2 x 12V power port
- Windshield wiper
- Advanced Operating Modes: Power, Run, Economy
- All down stabilizer controls
- Stabilizer movement and pilot arming alarm
- Integrated trailer hydraulic landing gear control
- Computerized Monitoring System

SALES AND SERVICE

Sold and serviced exclusively through Weiler Forestry dealers worldwide

WEILERFORESTRY.COM

ELECTRICAL

- 100 ampere alternator
- 24-volt electrical system with 2 12-volt batteries
- Main disconnect switch with Diesel Exhaust Fluid (DEF) purge indicator light
- 6 halogen working lights
- 1 halogen engine compartment service light
- 20 circuit electric swivel
- Product Link™ Ready

OTHER STANDARD EQUIPMENT

- Extreme-duty delimiting boom and stick
- Heavy-duty, extended length center mount sub-frame
- Flat top sub-frame deck with bolt-on skid resistant fenders
- Bolt-on sub-frame ladder
- 12" (305 mm) grapple mounting knuckle
- Ground level remote fuel and engine oil filters
- S-O-S sampling ports
- Ecology drains (engine oil, DEF, hyd tank)
- Counterweight 1,440 lb (653 kg)

OPTIONAL EQUIPMENT

- Extended Single "V" or Double "V" heels
- Delimiter & Trailer Package
 - Includes: 426 Delimiter & 50' Crawler Trailer w/ Hydraulic Landing Gear
- Delimiter & Trailer Ready
 - Includes: Integrated trailer hydraulic landing gear controls
- 4548 Straight Narrow Jaw Grapple (Grapple Saw Ready w/ 3 Port Swivel)
- 4548 Tapered Wedge Jaw Grapple (Grapple Saw Ready w/ 3 Port Swivel)
- 5055 Straight Narrow Jaw Grapple (Grapple Saw Ready w/ 3 Port Swivel)
- 5055 Tapered Wedge Jaw Grapple (Grapple Saw Ready w/ 3 Port Swivel)
- 5055 Straight Narrow Jaw Grapple
- 5055 Tapered Wedge Jaw Grapple
- 2 Additional bolt-on sub-frame ladders
- Slasher Hydraulics Adapter (JIC to O-Ring Face Seal)

WARRANTY

12 months standard, extended warranty available

Materials and specifications are subject to change without notice. Featured machines and photos may include optional equipment. All rights reserved.

K760, SS (10-2019)