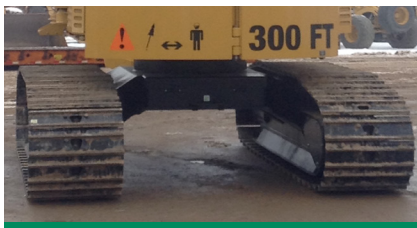


H157 TRACK HARVESTER



TRACTION AND UNDERCARRIAGE.

The X-frame body design offers 26" of ground clearance with D5 size heavy-duty links for adverse conditions. The 2-speed motors provide speed or power as required. Overall width of 9'4" and tractive effort to weight ratio of 1:1, make it perfect for climbing hills, soft terrain, and deep snow.



BEST IN CLASS SERVICEABILITY.

Two gull wing style doors, hinged counterweight fuel tank and hydraulic tilting cab enable best in class serviceability to all sides of the engine and hydraulic components. Ground level service access for all filters and grease points makes for safer and faster servicing.



EFFICIENT, LOW IMPACT MACHINE.

Low ground pressure and well matched tractive effort to weight ratio provide maneuverability with minimal site disturbance. The exceptional fuel efficiency and optimized cooling and hydraulic systems offer a light weight, small footprint machine with the lowest operating costs.



CARBODY MOUNTED TOOL BOX.

Easily accessible and spacious tool box offers storage space for tools and spare saw bars and chains to minimize down time when working at the stump. With over 3.5 ft³ (0.10 m³) of cargo space, keep key serviceable items secure with the machine for quick repairs.



MAXIMUM OPERATOR COMFORT.

Operator experience is maximized through a spacious cab, great forward and side to side visibility, easy access, and a heated and cooled seat. The forward positioned cab with 10 LED work lights offers optimum visibility day and night. Machine controls feature an easy to use operator interface.



FH190 HARVESTING HEAD.

The continuous rotation, fixed head with center post design has options for a 2 or 4 roller system. Valve and controller are mounted on the head to minimize hydraulic lines on the boom and stick. Length and optional diameter measuring are integrated into the Weiler control system.

H157 SPECIFICATIONS

Engine Model	Cat® C4.4 Stage 5	Tractive Effort	43,000 lbf 19 504 kgf	Fuel Tank Capacity	78 gal 295 L
Gross Power	184 hp 137 kW	Undercarriage Size	D5 HD	Engine Oil Capacity	6.0 gal 23 L
Engine Displacement	269 in³ 4.4 L	Undercarriage Pitch	7.5" 191 mm	Hydraulic System Capacity	70 gal 265 L
Weight (w/FH190 head)	47,000 lb 21 319 kg	Ground Clearance	26" 660 mm	Transport Width	9' 4" 2.84 m
Maximum Flow	80 gpm 303 L/min	Track Gauge	88" 2235 mm	Height	11' 1" 3.38 m
Max. Reach (w/FH190 head)	23' 0" 7.01 m	Track Length	156" 3962 mm	Length (boom ext., w/FH190)	29' 9" 9.07 m
Lift at Max. Reach (no head)	8,500 lb 3856 kg	Swing Torque	30,400 lbf-ft 41.2 kNm		

Base configuration includes 19' 10" (6.04 m) fixed harvester boom and stick, 24" (600 mm) shoes, and FH190 harvesting head.

POWERTRAIN

Cat C4.4 engine certified to EPA Stage 5
Hydraulically driven reversing fan
7 RPM swing speed

UNDERCARRIAGE

Heavy-duty track roller frames
D5 HD track
Top track support slides

HYDRAULICS

140 cc variable displacement pump
Load sensing valves

ELECTRICAL

24-volt electrical system
Weiler control and programming system
Satellite radio w/Bluetooth
6 cab mounted LED work lights
4 machine mounted LED work lights
Product Link™ ready

OTHER STANDARD EQUIPMENT

Hydraulic cab tilt for improved engine access
Hydraulically opening gull wing engine shields
Hydraulically opening fuel tank for improved engine access

FH190 SPECIFICATIONS

Weight (w/2 rollers)	7,000 lb 3175 kg	Max Cut Diameter	19" 483 mm	Feed Force - High Speed	2,320 lbf 1052 kgf
Max. Feed Roller Opening	21" 533 mm	Feed Speed - High Speed	15 ft/s 4.57 m/s	Feed Force - High Torque	4,640 lbf 2105 kgf
Max. Knife Opening	21" 533 mm	Feed Speed - High Torque	7.5 ft/s 2.29 m/s		

STANDARD EQUIPMENT

Center post structure
Head mounted valve and controller
Continuous rotation with hydraulic and electrical swivels
Three delimeter knives
Speed encoder on each roller drive motor

SALES AND SERVICE

Sold and serviced exclusively through Weiler Forestry dealers worldwide

WEILERFORESTRY.COM

OPERATOR ENVIRONMENT

Enclosed FOPS/OPS/ROPS/OR-OSHA/WCB certified cab
Air suspension seat with integrated joysticks and head rest
Left-hand tilt console
Retractable 4-point seat belt
Touchscreen display monitor and programmable operator controls
Scratch resistant polycarbonate windows
Reverse slope 1.25" (32 mm) front windshield
Front window emergency escape
Skylight
Left-side fresh air window
Pressurized cab with filtered ventilation
Heater / air conditioner / defroster
Mount locations for CB radio and other accessories
Behind seat storage tray
Three cup holders, two USB sockets, and literature holder

OPTIONAL EQUIPMENT

19' 10" (6.04 m) fixed boom and stick
26' (7.92 m) boom with telescopic stick (dangle head)
Arctic starting aid
Top track support rollers
24" (600 mm) SG D5 HD Track
24" (600 mm) DG D5 HD Track
28" (710 mm) DG D5 HD Track
2-Roller or 4-Roller FH190 continuous rotation harvester head

ADDITIONAL STANDARD EQUIPMENT

Independent Measuring Device (IMD) length measuring system
Machined feed rollers
11H size main saw w/auto tensioning, auto return, & adjustable bar speed
Integrated cab mounted operator controls with Weiler programming

WARRANTY

12 months standard, extended warranty available

Materials and specifications are subject to change without notice.
Featured machines and photos may include optional equipment. All rights reserved.

H157 HRC, SS (04-2021)