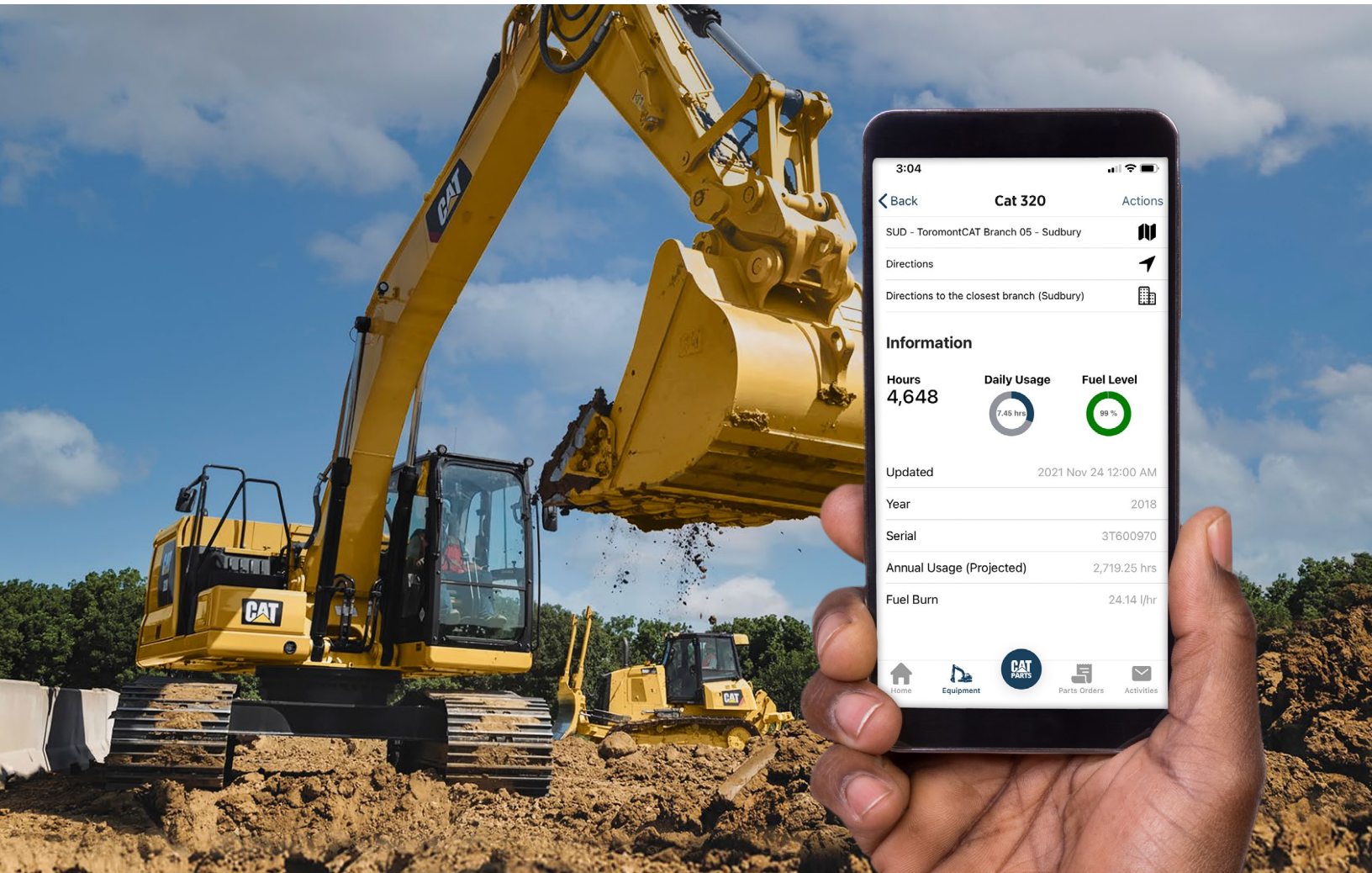




TOROMONT CONNECT User Guide

Version 1.2



Equipment and services management

Toromont Connect is a bilingual, comprehensive equipment and services management application that empowers you with the data you need to manage your equipment, order parts, locate and contact any Toromont branch, request connectivity and service – all with a click of a button.

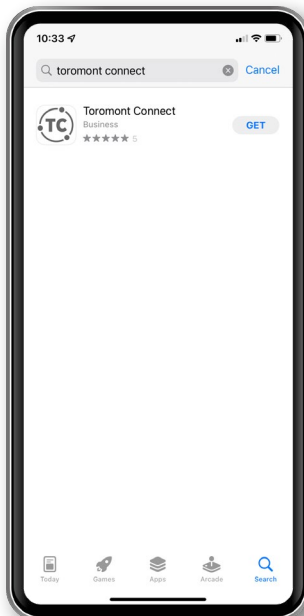
This document describes the Toromont Connect mobile app. Each section describes functionalities and provides instructions on how to use the app.

How to install Toromont Connect



To download Toromont Connect from Google Play on your Android phone:

1. Open Google Play.
 - On your phone, use the Play Store app Google Play.
 - On your computer, go to play.google.com.
2. Find Toromont Connect.
3. When Toromont Connect is selected, tap Install.



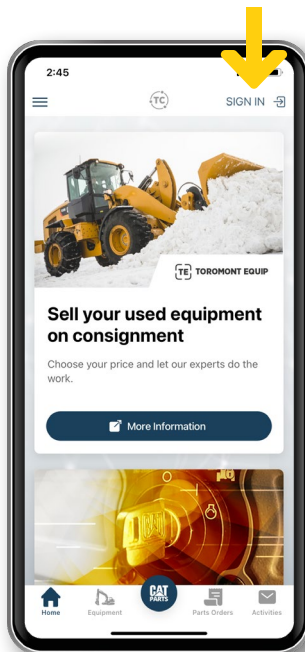
To download Toromont Connect from the App Store on your iOS phone:

1. From a Home screen, tap App Store.
2. To browse the App Store, tap. Apps. (at the bottom).
3. Search Toromont Connect by name.
4. Tap the app.
5. Tap GET.
6. If prompted, sign in to the App Store to complete the install.



Or, just scan the QR code and you will be automatically directed to the appropriate app download for your mobile device.

How to sign in into your account



How to sign in into your account

After downloading the application, users can register to Toromont Connect by tapping on sign-in.

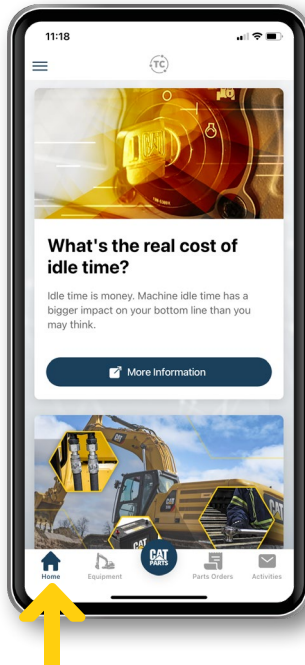


Data Security

Security is the most important aspect of Toromont Connect, and we take great pride in ensuring that your data is secure.

Users with admin access can grant or remove access to other Toromont Connect/Toromont Hub users within their organization at any time via Toromont Hub.

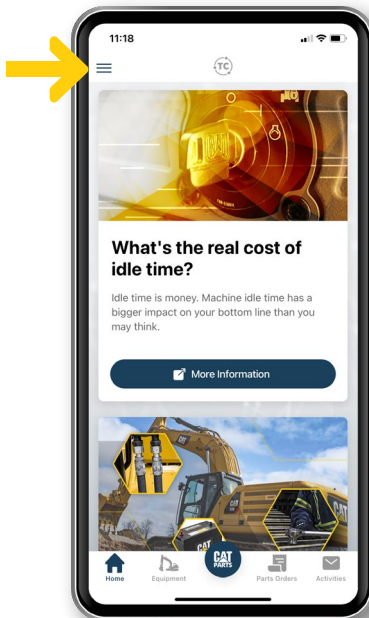
Core Functions



Home

The Home screen is your entry door into the Toromont Connect app. It displays your name and the company you are associated with, as well as a number of articles, links, or promotions tailored for you.

The Home tab will evolve over time, as new topics and promotions become available.



Main menu

User Profile - Toggle English/French

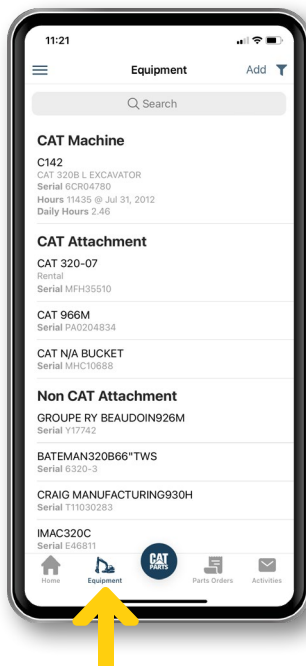
User Agreement - Acceptance on 1st login. Available for review.

Toromont Equip - link to Toromont's Used Equipment Website

Locations - displays all the Toromont branches with the distance from the user's current location as well as the detailed addresses, contact information, directions, and open hours of the different services provided at each branch (sales, service, rental, parts)

Call - Click to dial support Number

Email - Click to create/send a Support email.
For the e-mail subject line, enter "TC/TH".

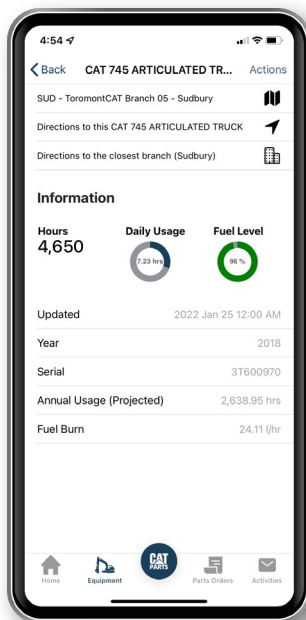


Equipment

The Equipment tab is the heart of Toromont Connect. Here, you will be able to access all your fleet's information, locate all your Cat and non-Cat equipment on the job site, and view operator performance and machine utilization. The equipment is displayed as a list, or as a single equipment details screen.

From the list, you can search for any piece of equipment by clicking on the Search icon and typing information such as the model and the serial number. You can also filter the equipment list using many different filter types.

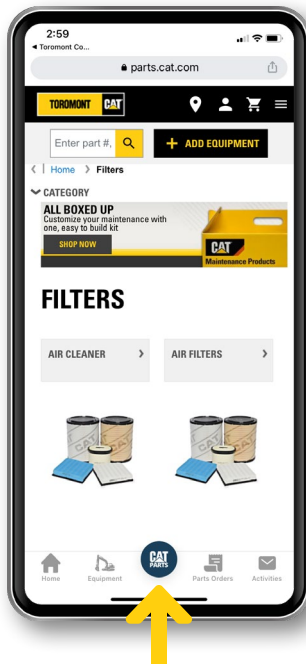
The List screen displays basic information about each piece of equipment, including its serial number, address, and SMU hours (if available).



You can also view more details by clicking on any machine. Doing so will open the Detail screen, which will show the machine's location on a map, as well as display detailed configuration data for that machine.

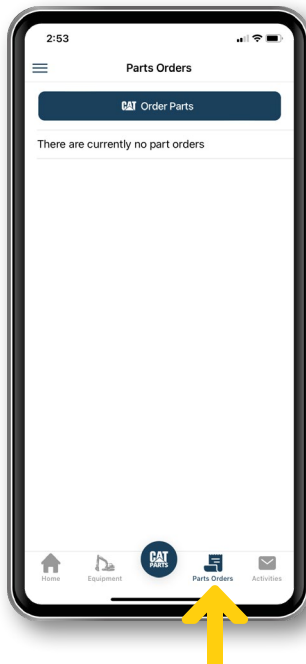
You can also send a request to update or delete equipment from your inventory by clicking on the Actions button from this screen.

By selecting the Map icon, you will be able to see all your equipment on a map, at the location they were last reported. Keep in mind that location data is only as accurate as last reported. Machines that are connected will show more accurate location data and SMU hours.



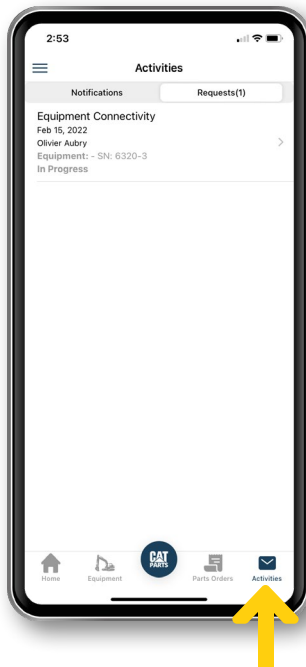
Cat Parts

The Cat Parts tab allows you to order parts immediately on the app. Order directly on [Parts.cat.com](https://parts.cat.com), where you can access and track your order history, tracking, and shop from over 1.4 million Cat parts.



Parts Orders

The Parts Orders tab allows you to track and manage parts orders. You can review orders history, status, cost details, and you can place other parts orders from this tab.



Activities

The Activities tab allows you to receive an automated notification as soon as your CVA PM Kit is ready. It also displays the status of your service requests and all messages from Toromont, whether they are CVA Parts Kits notifications or appointment confirmations.

Over time, more Toromont communications will be available via this notification process, thus streamlining your interactions with Toromont. Eventually, you will be able to filter, sort, and manage your messages just like you do with any other inbox.

Toromont Connect + Toromont Hub: Get the complete picture

By using Toromont Hub for all your business administration needs and Toromont Connect to monitor day-to-day operational information, you'll now have total visibility and control of all your Toromont Cat equipment and services – available anytime, anywhere.



Toromont Connect

Toromont Connect is an easy-to-use mobile application for instant access to fleet information. You can use it to manage your fleet, connect to your local branch, order parts and more, right from your smartphone.



Toromont Hub

Toromont Hub is a web application for administering all your Toromont equipment and services. You can use it to manage invoices, service contracts, equipment data, parts orders and more.

Equipment Management at a glance

Functions	Toromont Connect (mobile)	Toromont Hub (desktop)
Track hours, location, fuel, operator performance, machine health and utilization (Cat and non-Cat equipment)	✓	✓
Order parts, view order history, and track parts	✓	✓
Request Service	Available by June 2022	Available by June 2022
Request Connectivity	✓	✓
Get health & maintenance alerts	✓	✓
Manage planned maintenance	Available by June 2022	Available by June 2022
Equipment Maintenance (CVA)		✓
Connect with Toromont experts	✓	✓
Access operation & maintenance manuals, warranties, work orders, service history, etc.	✓	✓
Immediate fault notification	Available by June 2022	Available by June 2022
Activities Hub <ul style="list-style-type: none">• Notifications• Requests	✓	✓
Financial Information		✓

Ready to get connected?

1

Activate your account

If you're not already registered, go to

toromontcat.com/online-tools/toromont-hub

and sign up by entering some basic information about your company and your equipment.

As soon as Toromont verifies your account, you'll be able to access your equipment data.

2

Download Toromont Connect

Visit the Apple App Store or the Google Play Store to download the app and then log in with your Toromont account.

Your login credentials and password for Toromont Connect and Toromont Hub are the same for both applications.



?

Questions?

If you have questions or comments about Toromont Connect, you can contact the Toromont Connect support team directly by phone or email:

1-866-569-5979 (option 3)

esupport@toromont.com