

# B457A TRACK FELLER BUNCHER



## **ENHANCED MACHINE EFFICIENCY.**

Excellent multi-function capability through dedicated hydraulic pumps and optimized circuit configurations. Innovative ease-of-use features, such as the ability to reduce the frequency of foot pedal motions, improves operator efficiency.



## **POWERFUL PERFORMANCE.**

Enhanced stability and travel speeds, along with a powerful combination of lift capacity, swing torque, and tractive effort provides for maximum performance, which allows machine to excel in applications from thinning to final fell.



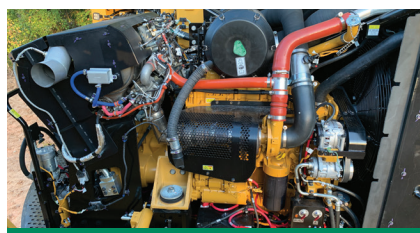
## **UNOBSTRUCTED GROUND CLEARANCE.**

Elevated, unobstructed carbody with 33" (832 mm) of ground clearance enables unimpeded travel over rocks, stumps, and other debris. Angle between carbody and roller frames allows maximum clearance across the width of the carbody.



## **MAXIMUM OPERATOR COMFORT.**

New cab maximizes operator experience through increased space, improved visibility, easier access, and options that include a heated and cooled seat, deluxe lights, and cameras. Machine controls feature an easy to use operator interface.



## **PROVEN RELIABILITY AND DURABILITY.**

Forestry-duty cooling package and extensive validation of key common components that includes the engine, swing system, and grease-lubricated Cat® 336 HD HEX undercarriage ensure machine uptime and reduce operating costs.



## **EXCELLENT SERVICEABILITY.**

Counterweight walkway enables machine level access to gull-wing engine enclosure that provides unmatched serviceability of components. Enclosure provides a flat area to complete preventative maintenance and service.



# B457A SPECIFICATIONS

<b>ENGINE MODEL</b>	Cat® C9.3B Tier 4 Final	<b>TRACTIVE EFFORT</b>	68,848 lbf 31 229 kgf	<b>FUEL TANK CAPACITY</b>	216 gal 819 L
<b>GROSS POWER</b>	330 hp 246 kW	<b>UNDERCARRIAGE SIZE</b>	336 HD HEX	<b>ENGINE OIL CAPACITY</b>	10.6 gal 40 L
<b>ENGINE DISPLACEMENT</b>	568 in <sup>3</sup> 9.3 L	<b>UNDERCARRIAGE PITCH</b>	8.5" 216 mm	<b>HYD SYSTEM CAPACITY</b>	79.8 gal 302 L
<b>WEIGHT (NO HEAD)</b>	67,020 lb 30, 400 kg	<b>GROUND CLEARANCE</b>	33" 832 mm	<b>TRANSPORT WIDTH</b>	10' 11" 3.32 m
<b>MAXIMUM FLOW</b>	322 gpm 1220 L/min	<b>TRACK GAUGE</b>	102" 2580 mm	<b>TRANSPORT HEIGHT</b>	11' 3" 3.32 m
<b>MAX REACH (w/CP222 SAW)</b>	27' 4" 8.32 m	<b>TRACK LENGTH</b>	192" 4868"	<b>LENGTH (BOOM EXT, W/CP222)</b>	34' 6" 10.51 m
<b>LIFT AT MAX REACH (NO HEAD)</b>	13,918 lb 6313 kg	<b>LEVELING CAPABILITY</b>	N/A	<b>LENGTH (BOOM TUCK)</b>	27' 6" 8.39 m

Base configuration includes standard feller buncher boom and stick and 24" (600 mm) single grouser shoes.

## POWERTRAIN

Cat® C9.3B engine certified to EPA Tier 4 final  
 Primary and secondary fuel filters, including water separator  
 Side-by-side radiator and oil cooler  
 Swing out air-to-air cooler and air conditioner condenser  
 Removable debris screen  
 Centrifugal engine air pre-cleaner  
 Under-hood 2-stage engine air cleaner  
 Variable pitch, reversing fan with guard  
 Heavy-duty starter and ether aid

## UNDERCARRIAGE

Heavy-duty track roller frames  
 Grease-lubricated 336 HD HEX track  
 Straddle mounted carrier rollers  
 Heavy-duty bottom track rollers  
 Heavy-duty recoil mechanisms  
 Full length track shoe support  
 Heavy-duty travel motor and swivel guards  
 Towing eyes on base frame

## HYDRAULICS

One hydraulic pump group for implement functions  
 One hydraulic pump group for track functions  
 Dedicated attachment pump for head functions  
 Dedicated saw pump  
 High-performance hydraulic return filters  
 325 size, high torque swing drive  
 Swing cushion valve and automatic swing parking brake  
 Electric hydraulic oil fill pump  
 Spare hose storage area

## ELECTRICAL

115 ampere alternator  
 24-volt electrical system with 2 12-volt batteries  
 9 LED working lights and 2 LED service lights  
 Horn and travel alarm  
 Secondary engine shut off switch

## SALES AND SERVICE

Sold and serviced exclusively through Weiler Forestry dealers worldwide.

## OPERATOR ENVIRONMENT

Enclosed FOPS/ROPS/OPS/OR-OSHA/WCB certified cab  
 Air suspension with integrated joysticks and head rest  
 Left-hand tilt console  
 Retractable 4-point seat belt  
 Touchscreen display monitor and programmable operator controls  
 Scratch resistant polycarbonate windows  
 Reverse slope 1.25" (32 mm) front windshield  
 Front window emergency escape  
 Skylight  
 Left-side fresh air window  
 Pressurized cab with filtered ventilation  
 Radio ready with speakers  
 Joystick gather arm(s) controls  
 Mount locations for CB radio and other accessories  
 Behind seat storage tray  
 Three cup holders, two USB sockets, and literature holder

## OTHER STANDARD EQUIPMENT

Heavy-duty hood enclosure  
 Heavy-duty counterweight with machine level engine enclosure access  
 Heavy-duty doors, covers, and bottom guards

## OPTIONAL EQUIPMENT

Standard Feller Buncher or Intermittent Saw Boom and Stick  
 Intermittent Saw Boom and Stick Omission  
 1.18" (30 mm) or 1.97" (50 mm) Counterweight  
 Standard or Star Carrier Rollers  
 24" (600 mm) SG 336 HD HEX Track  
 28" (710 mm) SG or DG 336 HD HEX Track  
 36" (900 mm) TG 336 HD HEX Tri-Track  
 Reduced Tractor Height Cab w/ Front or Rear Hinged Door  
 Standard (9 LED) or Deluxe Lights (14 LED Total Lights)  
 Rear Camera  
 Standard Oil & Coolant, 2 Additional Batteries, or Arctic Preheater  
 Product Link™ (PL243 Cellular or PL631 Satellite)  
 Vacuum Pump  
 CP222 Continuous Saw w/ Carbide or Steel Teeth

## WARRANTY

12 months standard. Extended warranty available.

